

351 SANTA FE DR

ENCINITAS, CA 92024



MEDICAL OFFICE SPACE FOR LEASE

AVAILABILITY

Highlights



3,746 SF office/medical suite customizable to your specific needs; located in 25,006 SF building with recently enhanced common areas



Immediately adjacent to Scripps Memorial Hospital Encinitas, which shares a campus with many other physician offices and medical buildings, including Scripps Clinic Encinitas, an outpatient imaging center, a 24-hour emergency room & multiple ICUs.



Walking distance to Swami's Beach, Encinitas Community Park, 24-Hour Fitness, Rite Aid/pahrmacy, Vons & many other amenities



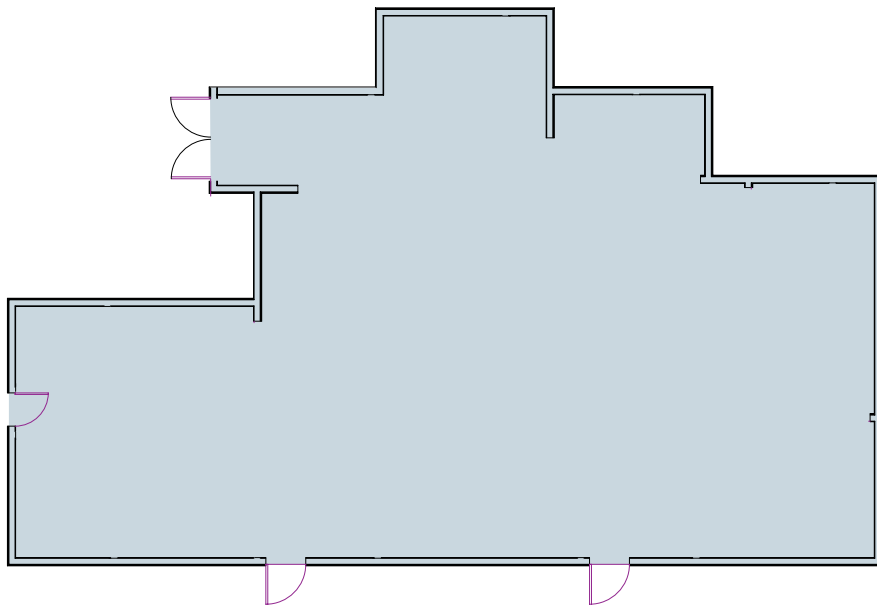
Easy access to I-5 and Coast Highway



Price: \$3.95/SF Modified Gross plus Electricity & Janitorial

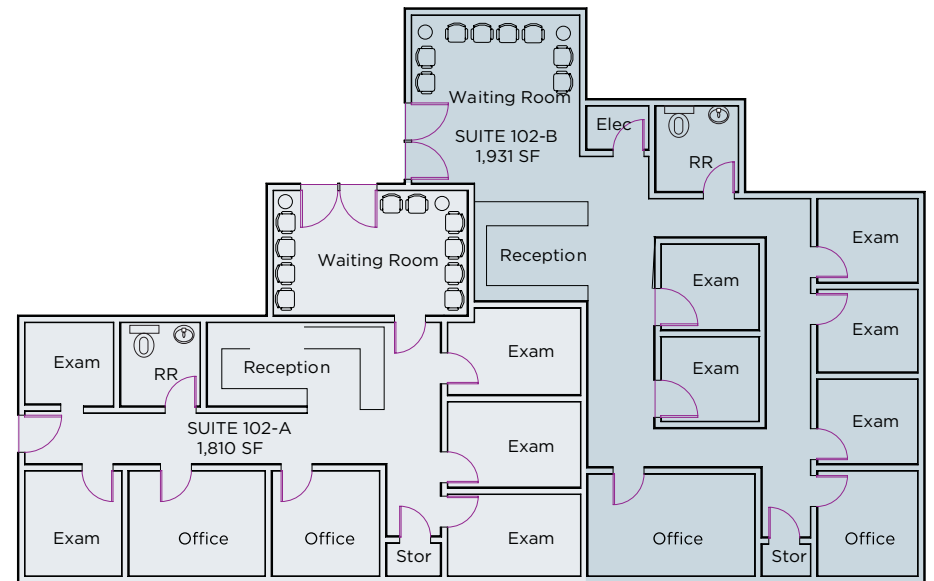


FLOOR PLANS



SHELL CONDITION

Suite 102
3,746 Sf



CONCEPTUAL PLAN

Suite 102 - Demised

Suite 102 - A
1,812 Sf

Suite 102 - B
1,934 Sf

351 SANTA FE DR
ENCINITAS, CA 92024



Scripps Memorial Hospital
Encinitas

AMENITIES:

Swamis
City Taco
Philz Coffee
Goodonya
101 Diner
Encinitas Cafe
Maurizio's Trattoria Italiana
Better Buzz Coffee Roasters
Lotus Cafe and Juice Bar
Sushi Lounge Encinitas
Encinitas Community Park
Vons
Rite Aid/Pharmacy
24 Fitness
Earth's Elements